

The Domino C-Series

Standard print large character printers, for simple and cost-effective coding onto outer cases, trays and sacks.



Key Benefits:

Maximum Performance and Reliability

- Proven valve jet technology ensures exceptional reliability and uptime
- 1litre of ink produces 1/2 million single line characters, enabling continuous coding and fewer bottle changes
- Pressurised ink system ensures reliable ink delivery for optimum performance

Complete Flexibility

- Fully adjustable print head enables easy repositioning on production lines
- Interface stores up to 50 standard messages for quick set up wherever required

Easy to Use

- Integrated user interface has simple keyboard layouts and a LCD display
- Icon based functions

Easy to Install

- Compact and unobtrusive design
- Integrated print head bracket
- Integral photocell



Main Features:

Totally Efficient

- Box count facility
- Programmable time and date codes, shift codes and sell-by dates
- Real-time product counting
- Password protection for increased security

Clean & Hygienic

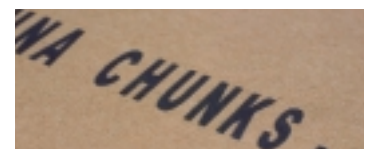
- Clean and simple design is ideal for food and pharmaceutical industries
- Disposable ink containers reduces risk of leaks and mess
- Illuminated ink level display allows levels to be checked at a glance

Environmentally Friendly

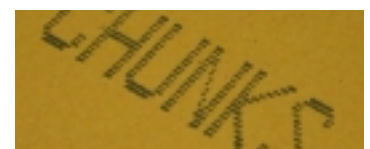
- Uses water based inks available in a choice of black, red, blue and green, provided in disposable containers



Small, compact and unobtrusive



C100 high-quality code



Standard print DOD code

Improved Print Quality with C100:

Upgrade to the C100 for greater flexibility with the same easy-to-use software as the C-Series Standard Printers -

- Higher quality print
- Choice of fonts and embedded graphics
- Remote print head option
- Exceptional value for money

Technical Specification:

	C7	C16	C34	C100
Character Heights	10/17 mm (0.39/0.66")	10/14/20/32 mm (0.39/0.55/0.78/1.26")	10/14/20/32/68 mm (0.39/0.55/0.78/1.25/2.68")	4/8/17 mm (0.16/0.31/0.67")
Maximum Line Speed	35 m/min (115 ft/min)	35 m/min (115 ft/min)	35 m/min (115 ft/min)	80 m/min (263 ft/min)
Print Resolution	Standard print	Standard print	Standard print	Up to 300 dpi*
Ink Capacity	1 or 3-Litre (2.11 or 6.34 US pints)	1 or 3-Litre (2.11 or 6.34 US pints)	3-Litres (6.34 US pints)	200ml or 1-Litre (0.42 - 2.11 USpints)
Print Head Length	249 mm (9.80")	247 mm (9.72")	273.2 mm (10.75")	235 mm (9.25")
Print Head Width	112 mm (4.40")	112 mm (4.40")	165.6 mm (6.51")	113 mm (4.44")
Print Head Depth	88 mm (3.46")	108 mm (4.25")	121 mm (4.76")	108 mm (4.25")
200ml Base				
Ink Base Height	N/A	N/A	N/A	360mm (14.17")
Ink Base Width	N/A	N/A	N/A	152mm (5.98")
Ink Base Depth	N/A	N/A	N/A	108mm (4.25")
1-Litre Base				
Ink Base Height	315.5mm (12.42")	315.5mm (12.42")	N/A	507mm (19.96")
Ink Base Width	155 mm (6.10")	155 mm (6.10")	N/A	228mm (8.97")
Ink Base Depth	110.5 mm (4.35")	110.5 mm (4.35")	N/A	139mm (5.47")
3-Litre Base				
Ink Base Height	328.5 mm (12.93")	328.5 mm (12.93")	328.5 mm (12.93")	N/A
Ink Base Width	173mm (6.81")	173mm (6.81")	173mm (6.81")	N/A
Ink Base Depth	110.5 mm (4.35")	110.5 mm (4.35")	N/A	139mm (5.47")
Unit Weight (200ml)	N/A	N/A	N/A	8.0 Kg (17.64 lbs)
Unit Weight (1-Litre)	8.2 Kg (18.07 lbs)	8.4 Kg (18.51 lbs)	N/A	10.0 Kg (22.04 lbs)
Unit Weight (3-Litre)	11 Kg (24.25 lbs)	11.2 Kg (24.69 lbs)	11.8 Kg (26.01 lbs)	N/A
Construction	Stainless steel	Stainless steel	Stainless steel	Stainless steel
Electrical	90 – 240 V @ 50 – 60 Hz	90 – 240 V @ 50 – 60 Hz	90 – 240 V @ 50 – 60 Hz	90 – 240 V @ 50 – 60 Hz
Operating Temperature	5° – 35° C (41° – 95° F)	5° – 35° C (41° – 95° F)	5° – 35° C (41° – 95° F)	5°-35° C (41° – 95° F)
Humidity (Non-condensing)	10%-90%	10%-90%	10%-90%	10%-90%
Options	External photocell	External photocell	External photocell	External photocell as standard, Remote print head C100x

* Speed dependent

Australia
Domino (Australia) Pty. Ltd.
Unit 12
6 Gladstone Road
Castle Hill
Sydney
NSW 2154
Tel: + 61 2 9894 7833

Canada
Domino Printing
Solutions Inc.
2751 Coventry Road
Oakville
Ontario
L6H 5V9
Tel: + 1 800 387 7972

India
Domino Printech India
Private Limited
167, Udyog Vihar Phase I,
H.S.I.D.C Gurgaon -
122016 Haryana
Tel: + 91 124 500 7406

United Arab Emirates
Domino UK Ltd (Dubai)
PO Box 16984
Jebel Ali Dubai
Tel: + 971 4 88 35003

United Kingdom
Domino UK Ltd
Bar Hill
Cambridge
CB3 8TU
Tel: + 44 1954 782 551

United States of America
Domino Amjet, Inc.
1290 Lakeside Drive
Gurnee
Illinois 60031
Tel: + 1 800 486 7351



www.domino-printing.com

