

# M230i-S & SP

## Safe and flexible labelling

The **M230i-S** and **M230i-SP** models provide a new level of safety to automated front or rear labelling without compromising performance operability. With an incorporated Autostop feature operator safety is ensured, whilst the compact footprint and flexible & rigid design makes them adaptable to your specific needs now and way into the future.



## Performance

- ◆ Short version for maximum throughput and long version when reach is key.
- ◆ Articulated pad allows for label delivery to product panel variances.
- ◆ Label Check sensor ensures the label does not get lost.

## Maximum uptime

- ◆ 600 m ribbon & label roll capacity within a compact footprint.
- ◆ Unique pad design allows for any label variation without changeover.
- ◆ Simple preventative maintenance access points.
- ◆ Easy to change long life thermal print heads.

## Safer by design

- ◆ Innovative pinch point protection to prevent incidental contact injuries.
- ◆ Autostop feature to prevent damage in the event of an obstruction.
- ◆ Air loss detection and protection against system damage.

Scan with camera  
to watch it operate





## Two models to meet your needs

In order to be as flexible as possible two models, **M230i-S** and **M230i-SP** are available. Factors that determine which model to choose are:

- ◆ Desired throughput
- ◆ Label orientation
- ◆ Space availability
- ◆ Operator comfort and availability



## Optional *TouchPanel* User Interface

For effortless control and status reporting **TouchPanel** is our unique, simplified operator interface that gets the printer into action quickly and simply. No complex menus or parameters, just enter the job and away you go.

- ◆ Quick access to favourite menus and settings via large user-friendly icons and customisable home screen.
- ◆ Easy prompted input of data into label templates.
- ◆ Speed up changeovers and help eliminate coding selection errors with simplified Message Store and live WYSIWYG preview.

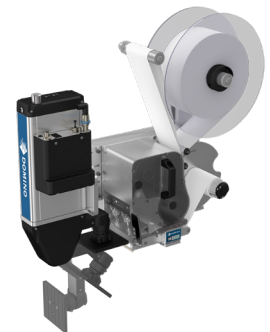
## Technical Specification

For labelling on the front or rear the **M230i-S** and **M230i-SP** can be configured to suit your specific needs. All M-Series units are equipped with a powerful Printer Control Unit (PCU).

		M230i-S4/SP4	M230i-S6/SP6
Print width		108 mm (4")	162 mm (6")
Print technology		Thermal Transfer / Direct Thermal	
Resolution		12 dots/mm (300dpi)	
Orientation		Left hand or Right hand	
Label & Ribbon lengths		Up to 600 m	
Typical capacity		55 labels/min	50 labels/min
Distance to product (to center of pad)		Up to 270 mm	
Label sizes (WxL)		25x15* mm - 150x210 mm *55 if Label Check required	
Dimensions (HxWxL)	S	Min: 625 x 262 x 735 mm Max: 625 x 262 x 941 mm	Min: 625 x 317 x 751 mm Max: 625 x 318 x 941 mm
	SP	Min: 625 x 379 x 619 mm Max: 625 x 489 x 681 mm	Min: 625 x 384 x 626 mm Max: 625 x 543 x 681 mm

		PCU
Communication		2xRS232, 1xUSB 2.0, Ethernet
I/Os (configurable)		10 Inputs and 10 Outputs
User interface		Graphical display with 25 languages
Dimensions (HxWxL)		130 x 280 x 405 mm

**M230i-S4**



**M230i-SP4**



[www.domino-printing.com](http://www.domino-printing.com)